



**AQUATIC ENTERPRISE COMPANY**

# **Artemia cysts**



**For Professional Hatcheries**







Bohai Bay Artemia cysts are harvested generally, indiscriminately from the surface and shores of Bohai Bay, China. After processing, a quality assessment is performed each harvest is subjected to a fingerprinting to categorize all important characteristics and parameters such as hatching, enrichment kinetics, decapsulation, separation and etc... Based on the results, our factory grades and selects the cysts that are best suitable for fish, shrimp and oyster hatcheries.

## Typical Performance

Our Artemia cysts are small, fast hatching.

They are available in 4 different grades : 90%, 85%, 80% and 75%

## Biometrics

Nauplii Size :  $\pm 500$  micron

Cysts Count : 220,000 ~ 230,000 per gram

Avg. Cysts Diameter : 240-260 microns

## Composition

Crude protein : 60%

Crude lipids : 12%

Crude ash : 8%

Moisture : 6%

## Hatching Conditions (Very Important)

Do not wash the artemia cysts!

Temperature : 26 - 28°C

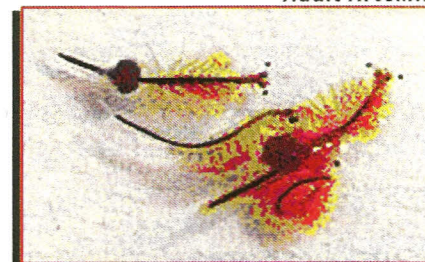
Salinity : 15 - 30 ppt

PH : 8.0 - 8.5

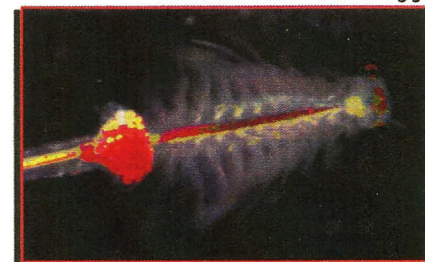
Water volume per can : 150L ~ 200L

Hatching time : 18 - 30 hours

Adult Artemia



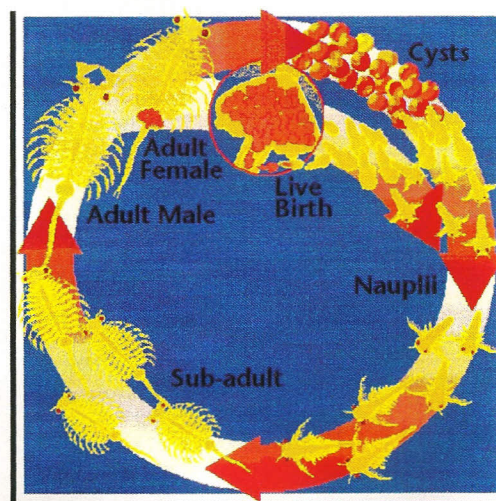
Female Artemia with eggs



Nauplii Artemia



Life Cycle of Artemia







## Packaging

The product is nitrogen flushed and vacuum sealed, available in 425 g cans.

## Storage

Packaging should be maintained carefully closed.  
For optimal storage, keep in a dry place at maximum 5°C  
Once opened, the product should be used immediately.

Not for human consumption.



## About Us

Now, our company distributes tons of brine shrimp eggs each year, in a few series of brand such as Emperor and Aquatic brand. These artemia enjoy high reputation in South East Asia.

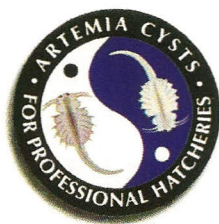
**Aquatic Enterprise Co** (Company Reg. No. 47809) was established in 1999 and commenced business thereafter. Aquatic Enterprise Co is in the forefront in supporting the local fish and shrimp farming industry through the provision of **quality aquaculture products**, both hatchery and grow-out and technical advise on good husbandry techniques, disease monitoring matters through its advance diagnostic laboratories, the first of its kind in Borneo Island. Thus, our company has been appointed as global distributor by various international principals to act and conduct in all matters in relation to the distribution and sale of the above mentioned artemia brands globally.





AQUATIC NETWORKS IN MALAYSIA

"Together Pursuing Aquaculture Excellence"



## **AQUATIC ENTERPRISE CO.**

No. 285, Lot 3181, Ground Floor & 1st Floor  
Block 11, Jalan Kedandi, Tabuan Dusun  
93350 Kuching, Sarawak, Malaysia

Tel: +6082 365 370 Fax: +6082 365 037

Email: [chris@shrimpcare.com](mailto:chris@shrimpcare.com)

[www.shrimpcare.com](http://www.shrimpcare.com)

[www.marinefishculture.com](http://www.marinefishculture.com)